

**K-STATE**  
Research and Extension



Phillips Rooks  
District



## APRIL 4-H NEWSLETTER

2  
0  
2  
4

### TEAM:


Anna Muir, Director  
Rachael Brooke, Agent  
Cody Miller, Agent  
Cindy Walker, Agent  
Kristin Nash, Office Professional  
Jenny Reichard, Office Professional

784 Sixth Street  
Phillipsburg, KS 67661  
785-543-6845

115 N. Walnut St.  
Stockton, KS 67669  
785-425-6851

**4-H MOTTO -  
TO MAKE THE BEST,  
BETTER.**

K-State Research and Extension is an equal  
opportunity provider and employer.



## STATE 4-H NEWS

### **SPRING INTO VOLUNTEERING**

April 20 from 9:00 a.m. to 3:00 p.m. on the K-State Campus at Salina. The goal is for volunteers to go home recharged, excited, and ready to try some new things in their volunteer role. Register here by April 5—<https://www.kansas4-h.org/volunteers/volunteer-continuing-education/index.html>

### **LIVESTOCK COUNTY FAIR MANAGEMENT CLINIC**

April 15 and 18 from 7:00 to 9:00 p.m. via Zoom. This clinic is designed for county fair board members, K-State Research and Extension Agents and 4-H volunteers involved in local livestock fair management and leadership. The clinic has been divided over two evenings with different topics being covered each night. The sessions will be recorded so those who are not able to attend may watch at their convenience. Register here by April 8—[https://kstate.qualtrics.com/jfe/form/SV\\_2nLMofH3IkeU182](https://kstate.qualtrics.com/jfe/form/SV_2nLMofH3IkeU182)

### **INSECT ART CONTEST**

Plan to enter the Insect Superheroes Art Competition for all ages (Kindergarten to adults). Entries are due April 15. For more information and the entry form check out [Pesticides IPM | Research and Extension | Kansas State University \(k-state.edu\)](#)

### **K-STATE ANIMAL SCIENCE LEADERSHIP ACADEMY**


June 5-8 at Kansas State University in Manhattan. The program will feature interactive workshops, tours, and faculty mentor time with Animal Sciences and Industry professors. Industry leaders will also join to share their knowledge and expertise. Applications are due by April 15—<https://www.asi.k-state.edu/extension/youth-programs/events/k-state-animal-science-leadership-academy/>

### **ROCK SPRINGS RANCH OPEN HOUSE**

April 21 from 1:00-4:00 p.m. Rock Springs Ranch is located 10 miles south of Junction City. Come and tour the property, see the cabins, activity center, pool, ropes course, horses, dining hall and lots more. They want to share the 4-H camp experience with everyone. RSVP here—<https://www.rockspringsranch4hcamp.org/upcoming-events/>

### **NATIONAL VOLUNTEER WEEK—APRIL 21-27**

4-H thrives because of the dedicated volunteers that share their time and talents. Please remember to let your club leaders, project leaders and other 4-H volunteers know that you appreciate them. THANK YOU volunteers for making a difference in the lives of our young people.



## STATE 4-H NEWS

### 4-H SHUTTERBUGS PHOTOGRAPHY EVENTS

April 27 from 9:00 a.m. to noon at the Botanica Gardens in Wichita.

May 4 from 8:30 a.m. to noon at the Lee Richardson Zoo in Garden City.

Come learn more about photography skills and get a jump start on your photography project for the fair. Register here— <https://www.kansas4-h.org/events-activities/conferences-events/photography/index.html>

### STATE LIVESTOCK NOMINATION INFORMATION

May 1—Market Beef Nominations Due

June 15—Small Livestock and Commercial Heifer Nominations Due

Be sure to read the Rookie Guide, it's available here—<https://www.asi.k-state.edu/extension/youth-programs/nominated-livestock/>

### CHAMPIONS LIVESTOCK JUDGING CAMP

June 3-5 (Camp 1) and June 10-12 (Camp 2) at Kansas State University in Manhattan. An intense judging camp for youth ages 14-18 who are seriously interested in enhancing their livestock judging and oral communication skills. Prior livestock judging experience is necessary. Register here—<https://www.asi.k-state.edu/extension/youth-programs/events/judging-camps.html>

### 4-H DISCOVERY DAYS


June 5-7 at Kansas State University in Manhattan. Youth ages 13-18 before January 1, 2024 are invited to register. Come to learn new things, find a career/college path, meet new friends, experience K-State campus and develop skills. There's over 60 class sessions to choose from. Some classes will fill quickly so register today. <https://www.kansas4-h.org/events-activities/conferences-events/discovery-days/index.html>

### LIVESTOCK PROJECT RESOURCES

If you're looking for information on how to feed, care for, groom and show your livestock projects here's some resources for you—<https://www.asi.k-state.edu/extension/youth-programs/education/educational-materials.html> You may also want to check out the Swine Across Kansas, Beef Across Kansas, Sheep Across Kansas and Goats Across Kansas series—<https://www.twincreeks.k-state.edu/youth-aq/index.html>

### HORSE SHOW PREPARATION

Are you and your horse ready to go to a show? Here's some guidelines to assist you as you practice and prepare for the show season. <https://www.kansas4-h.org/projects/animal-science/horse/docs/AreYouReadyFinal.pdf>



## LOCAL 4-H NEWS

### UPCOMING MEETINGS

Phillips County 4-H Council Committees—April 22 at 7:00 p.m. at the Phillips County Annex Meeting Room; Day Camp, Fair Advertising, and County Champion Selection  
Phillips County 4-H Council—April 22 at 7:30 p.m. at the Phillips County Annex Meeting Room  
Rooks County 4-H Livestock Committee—April 8 at 7:00 p.m. at the 4-H Building  
Junior Leaders—April 8 at 7:30 p.m. at the 4-H Building  
Rooks County 4-H Council—May 13 at 7:00 p.m. at the 4-H Building

### REGIONAL 4-H CLUB DAY

April 5 at 5:00 p.m. at the Stockton High School, those selected from County 4-H Club Day will be participating. Guidelines can be found here: [Phillips County 4-H - Wakelet](#) and [Rooks County 4-H - Wakelet](#) As you prepare for your events please remember there are some great resources for project talks, demonstrations and public speaking here—<https://www.kansas4-h.org/projects/leadership-personal-development/communications.html>  
Those selected as top blue at County 4-H Club Day and are age 9 (before January 1, 2024) can take their project talks, demonstrations and illustrated talks to the Kansas State Fair. Remember to sign up for it when completing your entry form for the Kansas State Fair.

### PHILLIPS COUNTY 4-H/FFA LIVESTOCK JUDGING CONTEST

April 6 at the Phillips County Fairgrounds. Registration will begin at 9:00 a.m.

### GOATS ACROSS KANSAS SERIES—FEEDING & SHOWMANSHIP

April 7 at 2:00 p.m. by webinar. Meet a nutrition expert, goat show judge and notable goat exhibiting alumni as they share tips for success in the ring and before. Register here—[Goats Across Kansas Series - 'Feeding & Showmanship' Session Registration \(qualtrics.com\)](#)

### YOUTH FOR THE QUALITY CARE OF ANIMALS (YQCA)


Required for livestock exhibitors planning to sell livestock at the Rooks County Free Fair 4-H/FFA Livestock Sale, Kansas State Fair and Kansas Junior Livestock Show. Training will be available on April 8 at 6:00 p.m. at the Rooks County Fairgrounds, 4-H Building. Training is also available online at <https://yqcaprogram.org/> Please print your certificate and provide a copy to the Phillips-Rooks Extension District Office.

April 22 at 6:00 p.m. at the Phillips County Annex Meeting Room.

All livestock (bucket calves, beef, goats, sheep and swine) must be tagged and turned into the Phillips-Rooks Extension District by May 1 to be eligible for the Phillips County Fair and Rooks County Free Fair.

### WILDLIFE HABITAT EDUCATION PROGRAM CONTEST

April 25 at the Wilson Wildlife Area near Bunker Hill. The contest is about teaching young people about wildlife, the needs of wildlife, and their habitat. Youth can enter as a member of a team or individually. There are two age groups in the competition; 9-13 and 14-18 years of age. If you are interested in being a part of the group, please contact the Phillips-Rooks Extension District Office. Practices will be held in April.



## LOCAL 4-H NEWS

### 4-H DOG PROJECT MEETINGS

Planning to begin mid-April at the Phillips County Fair Building. If you are interested in being a part of the group, please let Austyn Werner know. Her cell number is 785-543-1937.

### ROOKS COUNTY 4-H/FFA LIVESTOCK TAGGING

April 20—Small Animal and Beef Tagging from 8:00 a.m. until finished at the Rooks County Fairgrounds, please contact the Phillips-Rooks Extension District in advance to help us prepare tags and billing, 785-425-6851 or [jreichar@ksu.edu](mailto:jreichar@ksu.edu) This is for goats, sheep, swine and market beef that didn't get tagged on March 23.

If the date doesn't work, families must make arrangements with the Phillips-Rooks Extension District Office for tagging prior to May 1 and bring their animals to Stockton. Animals nominated for state shows must follow date requirements for those shows. If your animal already has an eID tag in its' ear, please do not remove that tag; it's against the law. A non-eID tag will be used as the 4-H tag.

### 4-H/FFA LIVESTOCK TAGGING REQUIREMENTS

All livestock (beef, goats, sheep and swine) must be tagged with a 4-H tag, herd tag, and/or tattoo for identification purposes and turned into the Phillips-Rooks Extension District by May 1 to be eligible for the Phillips County Fair and Rooks County Free Fair. Goat and sheep project members, a scrapie tag or USDA Premise tag is also required. These tags should be provided by the breeder or person you are purchasing livestock from. Please contact the Phillips-Rooks Extension District Office for tags and to report livestock tag information. All livestock must be in the members possession by May 1.

### HORSE ID CERTIFICATE DEADLINE

If you are planning to show your horse at the Phillips County Fair or Rooks County Free Fair you must complete a horse identification certificate by May 1. The certificate should be turned into the Phillips-Rooks Extension District Office. [P1039 Horse Identification Certificate \(ksu.edu\)](#)

### ADD/DROP 4-H PROJECT DEADLINE

May 1—Deadline to make project changes that you plan to take to the Phillips County Fair or Rooks County Free Fair. Changes should be made here—<https://www.4honline.com/#/user/sign-in>

### PHILLIPS COUNTY FAIR PREMIUM REQUIREMENTS

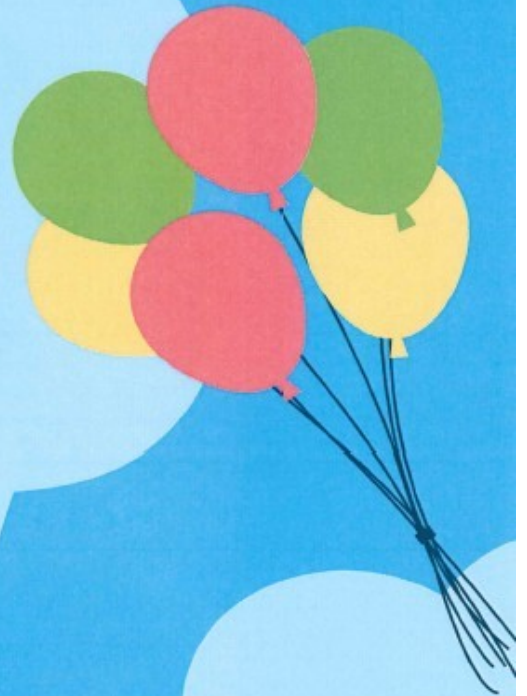
The Phillips County Fair Board implements the following in order for members to receive money for exhibiting at the Phillips County Fair as well as selling an animal in the Phillips County 4-H/FFA Livestock Premium Sale.

Members must attend three 4-H Club meetings from roll call to adjournment. Members must work in the Fair Food Stand. Members must also meet one of the following requirements: attend 4-H Sunday, participate in the county sponsored fundraiser, participate in County 4-H Club Day, participate in a 4-H leadership activity such as be a camp counselor, day camp, babysitting clinic, etc.



**SATURDAY, APRIL 13TH**  
**FOOD SERVED: 5:00 - 7:00 PM**  
**GAMES: 5:30 - 7:30 PM**

**JOIN US FOR OUR 2024**  
**PHILLIPS COUNTY**  
**FAIR ASSOCIATION**  
**PANCAKE FEED &**  
**4-H CARNIVAL**



**FUN FOR THE WHOLE FAMILY!**

**PHILLIPS COUNTY FAIR BUILDING**  
**1481 HWY 183, PHILLIPSBURG, KS**

**SAUSAGE DONATED BY JUSTIN & KELLY TAYLOR**



**K-STATE**  
 Research and Extension



Phillips Rooks  
 District

# April 27th

HOXIE, KS | 8:30 AM - 5 PM

Thank you to our sponsor:



## HAZARDOUS OCCUPATIONS SAFETY TRAINING IN AGRICULTURE FOR YOUTH AGES 14-15

### HOXIE IMPLEMENT

933 Oak Ave  
Hoxie, KS 67740

### \$10 PARTICIPATION FEE

(Includes manual rental, lunch and snacks.)  
MANUALS MAY BE PURCHASED TO KEEP  
FOR AN ADDITIONAL \$15.

### MANY THANKS TO OUR LUNCH & REFRESHMENT SPONSOR: OUTDOOR BANK AND TO THE SPONSOR OF OUR NEW TRAINING MANUALS: THUNDER LINNEN MEMORIAL FUND

This program will provide the trainee with the knowledge and information of tractor safety and farm hazards. Safety training is required by the U.S. Department of Labor for youth ages 14-15 who will be working on a farm for someone other than their parents. However, there are many cases where youth need certification even when working on the "family farm". Certification will be presented to participants who:

- Complete "Ag Safety For U" online module and exam before April 27th training
- Attend the entire in-person session on April 27th in Hoxie
- Review additional videos and at-home assignments
- Complete 6 hours of tractor/implement training with employer and safely demonstrate the ability to operate a tractor and all its controls according to safe operating procedures under the supervision of a parent or employer

### **PARTICIPANTS SHOULD BRING: MANUAL, PEN/PENCIL, & A READY-TO-LEARN ATTITUDE!**

### **Completed registrations due by Fri., April 19th!**

To register you may: Visit your local K-State Research and Extension Office listed below OR complete the survey by scanning the QR code and finalizing registration by visiting your local extension office below.

#### TWIN CREEKS DISTRICT

Decatur: 785-475-8121  
Graham: 785-421-3411  
Norton: 785-877-5755  
Sheridan: 785-675-3268

#### COTTONWOOD DISTRICT

Ellis: 785-628-9430

#### GOLDEN PRAIRIE DISTRICT

Gove: 785-673-4805  
Logan: 785-671-3245  
Trego: 785-743-6361

#### PHILLIPS-ROOKS DISTRICT

Phillips: 785-543-6845  
Rooks: 785-425-6851



Registration is NOT complete until you have finalized paperwork and paid fees at local KSRE office!

Kansas State University is committed to making its services, activities, and programs accessible to all participants. If you have special requirements due to a physical, vision, or hearing disability, contact the Twin Creeks Extension District at 785-421-3411. **Kansas State University Agricultural Experiment Station and Cooperative Extension Service** K-State Research and Extension is an equal opportunity provider and employer.

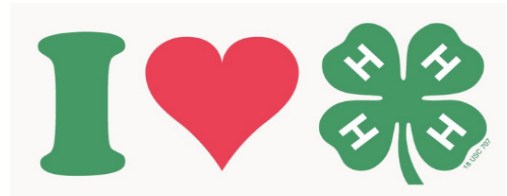
**K-STATE**  
Research and Extension



# 4-H CALENDAR OF EVENTS

## APRIL

- 5 Regional 4-H Club Day
- 6 Phillips County 4-H/FFA Livestock Judging Contest
- 7 Goats Across Kansas - Feeding & Showmanship
- 8 Youth for the Quality Care of Animals (Stockton)
- 8 Rooks County 4-H Livestock Committee
- 8 4-H Junior Leaders
- 12 4-H Horse Show Judges Seminar
- 13 Phillips County 4-H Carnival and Pancake Feed
- 15 Insect Art Contest Entry Deadline
- 15 Livestock County Fair Management Clinic
- 18 Livestock County Fair Management Clinic
- 19-24 National 4-H Conference
- 20 Rooks County 4-H/FFA Small Animal Tagging
- 20 Spring Into Volunteering
- 21 Rock Springs Ranch Open House
- 22 Youth for the Quality Care of Animals (Phillipsburg)
- 22 Phillips County 4-H Council and Committees
- 25 Wildlife Habitat Education Program Contest
- 27 Shutterbug Photography Workshop at Botanica
- 27 Hazardous Occupations Safety Training in Agriculture



## MAY

- 1 Add/Drop Project Deadline on 4-H Online
- 1 Horse Identification Certificates Deadline
- 1 4-H/FFA Livestock Tag Deadline
- 1 State Livestock Nomination Deadline for Market Beef for Kansas State Fair and Kansas Junior Livestock Show
- 3-5 State Shooting Sports Coordinator Training
- 4 Shutterbug Photography Workshop at the Zoo
- 13 Rooks County 4-H Council

**Visit our website:**

<https://www.phillipsrooks.k-state.edu/4-h/>

## JUNE

- 3-5 Champions Livestock Judging Camp
- 5-7 4-H Discovery Days
- 5-8 K-State Animal Science Leadership Academy
- 10 4-H Junior Leaders
- 10-12 Champions Livestock Judging Camp
- 14-15 Insect Spectacular
- 15 State Livestock Nomination Deadline for Small Livestock and Commercial Heifers for Kansas State Fair and Kansas Junior Livestock Show
- 17-18 Citizenship Washington Focus
- 22 Northwest Regional Dog Conference
- 24 Phillips County 4-H Council



K-State Research and Extension is committed to providing equal opportunity for participation in all programs, services and activities. Program information may be available in languages other than English. Reasonable accommodations for persons with disabilities, including alternative means for communication (e.g., Braille, large print, audio tape, and American Sign Language) may be requested by contacting the event contact, Anna Muir, two weeks prior to the start of the event at 785-425-6851 or [amuir@ksu.edu](mailto:amuir@ksu.edu). Requests received after this date will be honored when it is feasible to do so. Language access services, such as interpretation or translation of vital information will be provided free of charge to limited English proficient individuals upon request.